

# *General Hardware*



 **Alcom**  
general door  
hardware

 **AustralianLock**  
COMPANY



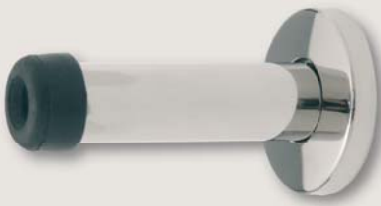
## **ALCOM General Hardware**

Built for strength and flexibility, the ALCOM range of General Hardware is made to complement ALCOM Architectural Door Furniture.

The contemporary ALCOM General Hardware is designed to suit any door and situation in both commercial and residential applications. Available in low-maintenance Satin Stainless Steel or Polished Stainless Steel finishes, the easily fitted and operated ALCOM General Door Hardware enhances safety and functionality.

The ALCOM General Hardware range includes floor and wall mounted door stops, handles, push plates, rose or plate pull handles, flush, skeleton and barrel bolts.

**Wall Mounted  
Door Stop**



230 Wall Mounted Door Stop SCP **APDS230SCP**  
230 Wall Mounted Door Stop CP **APDS230CP**

**Floor Mounted  
Door Stop**



29 Floor Mounted Door Stop SCP **APDS29SCP**  
29 Floor Mounted Door Stop CP **APDS29CP**

**Floor Door  
Stop Spacer**



29S Floor Door Stop Spacer SCP **APDSS29SCP**  
29S Floor Door Stop Spacer CP **APDSS29CP**

**Floor Mounted  
Door Stop**



250 Floor Mounted Door Stop SCP **APDS250SCP**  
250 Floor Mounted Door Stop CP **APDS250CP**

**Floor Mounted  
Door Stop**



228 Floor Mounted Door Stop SSS **APDS228SSS**  
228 Floor Mounted Door Stop PSS **APDS228PSS**

**Floor Mounted  
Door Stop**



229 Floor Mounted Door Stop SA **APDS229SA**

PULL HANDLES & PUSH PLATES

**Push Plate**



- SFPP252SF Push Plate 250 x 200 x 1.2 SSS **APPP252SFSSS**
- GFPP252GF Push Plate 250 x 200 x 1.2 SSS **APPP252GFSSS**
- SFPP365SF Push Plate 300 x 65 x 1.5 SSS **APPP365SFSSS**
- SFPP375SF Push Plate 300 x 75 x 1.5 SSS **APPP375SFSSS**
- SFPP310SF Push Plate 300 x 100 x 1.5 SSS **APPP310SFSSS**

**Pull Handle on Plate**



- SSSPH315 Pull Handle on Plate 300 x 65 x 150 x 16 **APPH315SSS**
- SSSPH320 Pull Handle on Plate 300 x 65 x 200 x 16 **APPH320SSS**

**"D" Handle**



- SSSPH125.12 "D" Handle 125 x 12 **APPH125/12SSS**
- SSSPH150.12 "D" Handle 150 x 12 **APPH150/12SSS**
- SSSPH150.16 "D" Handle 150 x 16 **APPH150/16SSS**
- SSSPH200.16 "D" Handle 200 x 16 **APPH200/16SSS**

**Pull Handle on Rose**



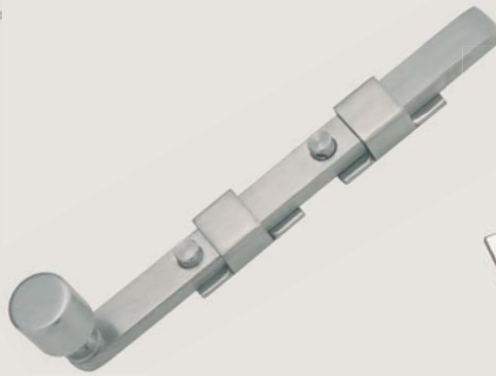
- SSSPHR100.10 Pull Handle on Rose 100 x 10 x 39 **APPHR100/10SSS**
- SSSPHR125.12 Pull Handle on Rose 125 x 12 x 39 **APPHR125/12SSS**
- SSSPHR150.12 Pull Handle on Rose 150 x 12 x 39 **APPHR150/12SSS**
- SSSPHR150.16 Pull Handle on Rose 150 x 16 x 47 **APPHR150/16SSS**
- SSSPHR200.16 Pull Handle on Rose 200 x 16 x 47 **APPHR200/16SSS**

**Flush Bolt**



- 842 x 150 mm Flush Bolt SCP **APFB842X150SCP**
- 842 x 200 mm Flush Bolt SC **APFB842X200SCP**
- 842 x 300 mm Flush Bolt SCP **APFB842X300SCP**
- 842 x 450 mm Flush Bolt SCP **APFB842X450SCP**
- 842 x 600 mm Flush Bolt SCP **APFB842X600SCP**

**Skeleton Bolt**



- 843 x 250 mm Skeleton Bolt SCP **APSB843X250SCP**
- 843 x 300 mm Skeleton Bolt SCP **APSB843X300SCP**
- 843 x 450 mm Skeleton Bolt SCP **APSB843X450SCP**

**Barrel Bolt**



- 844 x 150 mm Barrel Bolt SCP **APBB844X150SCP**
- 844 x 200 mm Barrel Bolt SCP **APBB844X200SCP**
- 844 x 300 mm Barrel Bolt SCP **APBB844X300SCP**
- 844LT x 150 mm Long Throw SCP **APBB844X150LSCP**
- 844LT x 200 mm Long Throw SCP **APBB844X200LSCP**

**Necked Bolt**



- 845 x 150 mm Necked Bolt SCP **APBBN845X150SCP**

**Indicator Bolt**



- IB Indicator Bolt SCP **APIBSCP**





**Contact** **Australian Lock Company Pty Ltd**

**17 Doyle Avenue**

**Unanderra NSW 2526 Australia**

**PO Box 479 Unanderra NSW 2526 Australia**

Telephone: **61 (0)2 4272 4922**

Facsimile: **61 (0)2 4272 4677**

Email: **sales@bilock.net**

Web: **www.alcom5000.com**  
**www.bilock.net**

Whilst the Australian Lock Company Pty Ltd has taken every effort to ensure that the information in this catalogue is accurate at the time of publication, we recommend that you consult your Sales Representative to ascertain information in specific products and specifications prior to placing your order. Please note that we reserve the right to make changes without notice. The Australian Lock Company Pty Ltd will not be liable for any damage or loss arising from any errors or omissions in the information contained in this catalogue or arising from the use of the information contained herein.